

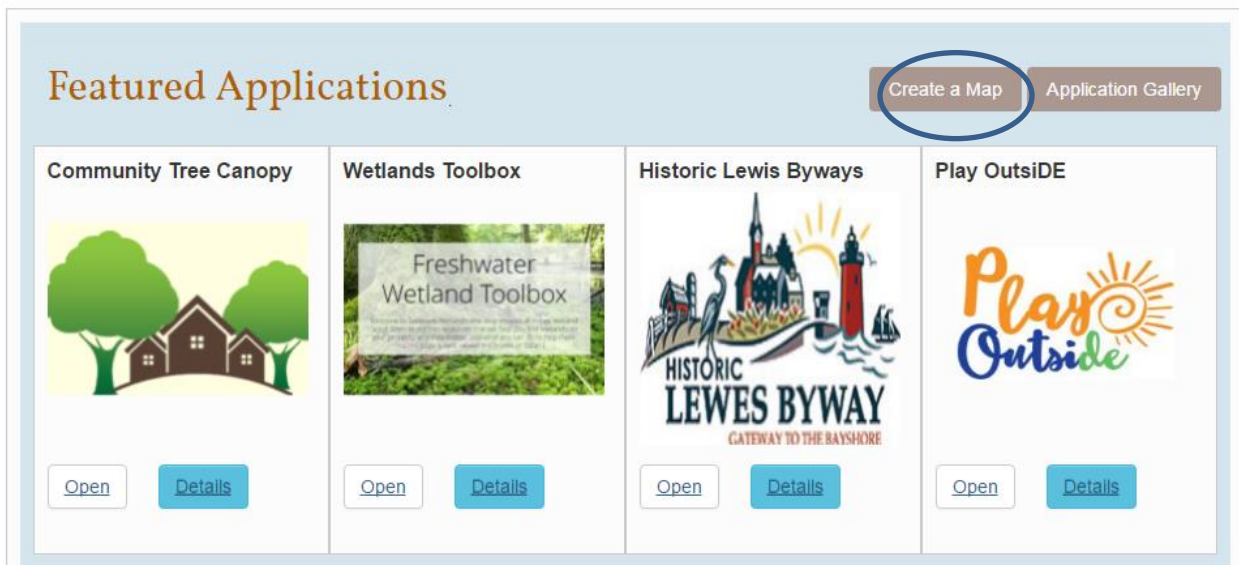
Overview

1. How to add Parcels to a Web Map
2. How to add Parcels to ArcDesktop

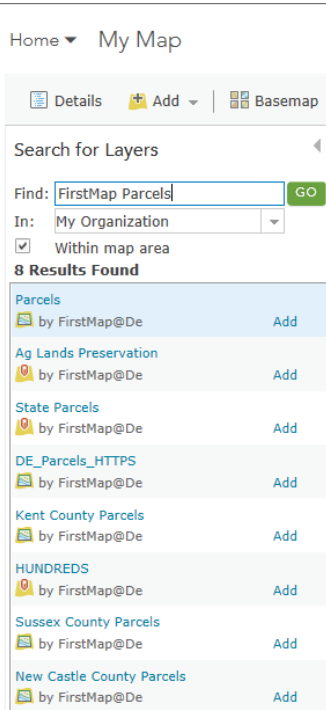
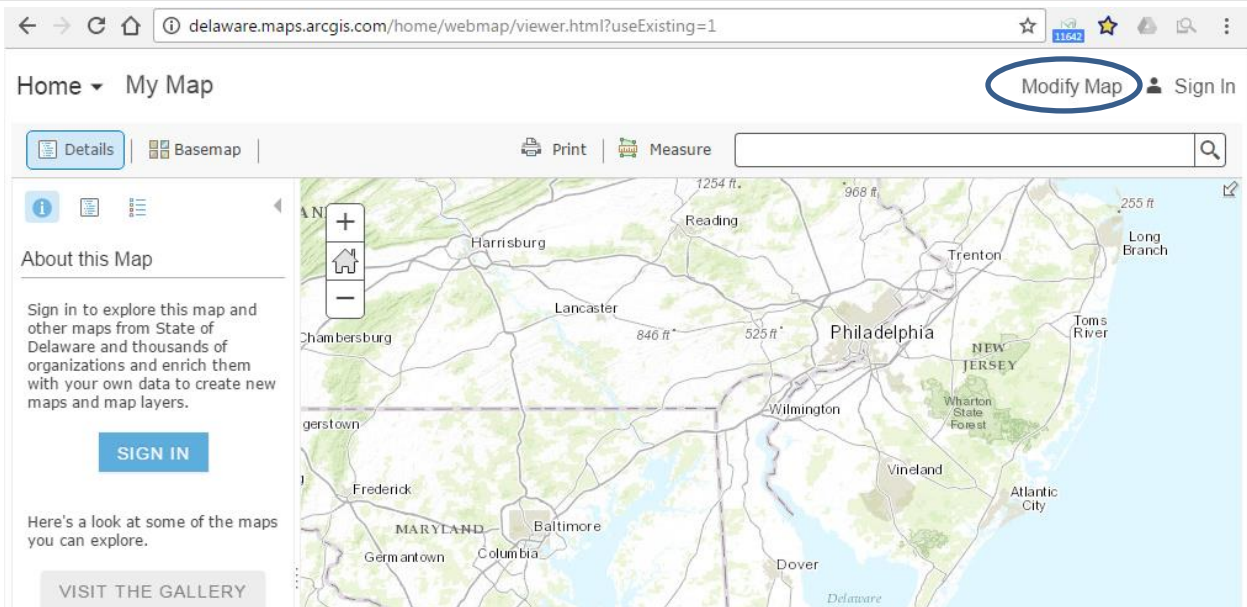
1. How to add Parcels to a Web Map

Start at the FirstMap home page: <http://firstmap.delaware.gov/>

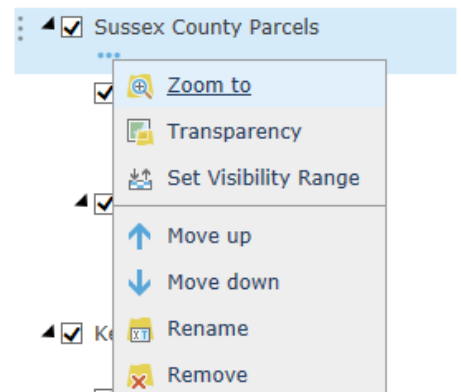
Click: **CREATE A MAP**



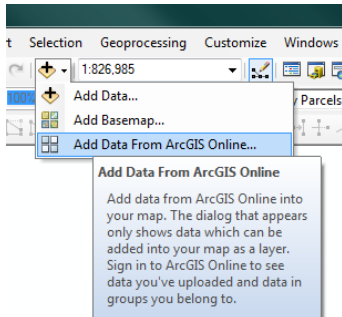
Click: **'MODIFY MAP'** to enable editing of the Map.




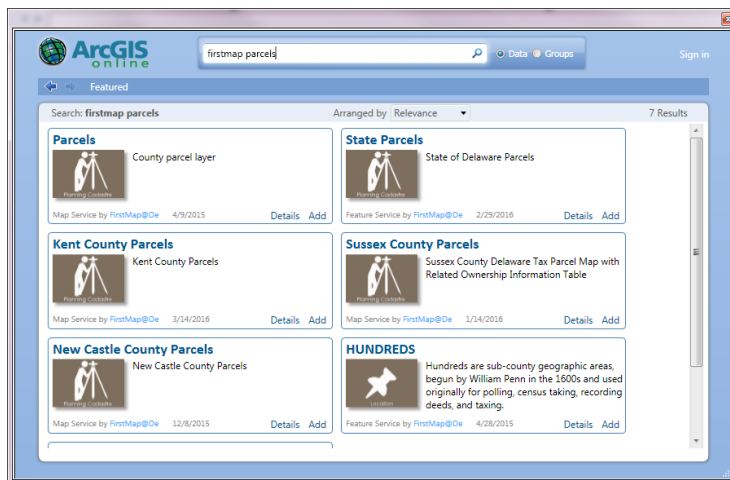
- Click **Add** then select **Search for Layers**.
- Under “Search for Layers” in the “Find” field type **FirstMap Parcels** (NOTE: There are no spaces between First and Map).
- You will see a list of all the parcel layers that are available from FirstMap.
- Add the layers to your map by selecting the **Add** button next to the layer.
- When you are finished adding layers, click **DONE ADDING LAYERS** at the bottom.
- If the parcels are not showing, select the options for the layer and click on **Zoom To** to make the layer visible.



2. How to load Parcels into ArcMap

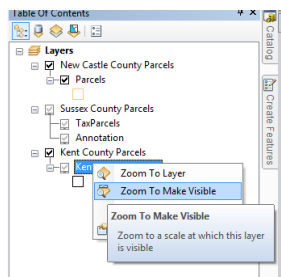


- Open ArcMap.
- Go to the **Add Data** Button: 
- Click the drop down arrow
- Select **Add Data from ArcGIS Online**.



- In the search window type **FirstMap Parcels**
- Select the radio button next to **"Data"**
- Scroll down and search for each of the county data, click **"Add"** in the lower corner of the description box. They will have to be added one at a time with the above process repeated.

Something to know after the Parcels have been loaded



- Each county has a different zoom setting on their data. Some of the counties do not draw until a certain zoom threshold is reached. To find that threshold do a right click on the feature and select **Zoom to Make Visible**. You may have to click the **"+"** next to the feature name to expand the list.
- The County Parcel data can be found through the above FirstMap Search; however, the data is being fed directly from each individual County. These directions do not include details do link directly to the county data as the format may change based on how each county handles their own data.