

Step 1 – Download Software

Download the WinSCP software at the below site.

Visit the following URL <http://winscp.net/eng/download.php>

Click the “Installation package” link:

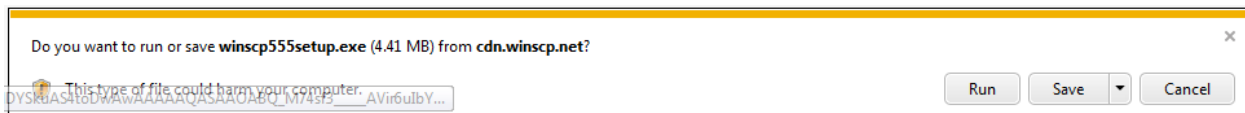
Download WinSCP

WinSCP 5.5.5

Installation package (4.4 MiB; 210,517 downloads to date)

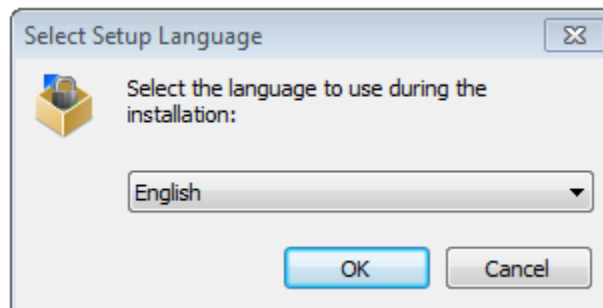
Step 2 – Install the WinSCP Client Software

When prompted, click ‘Run’.



Note: Your local machine should do a security scan after you click the ‘Run’ button in the previous step.

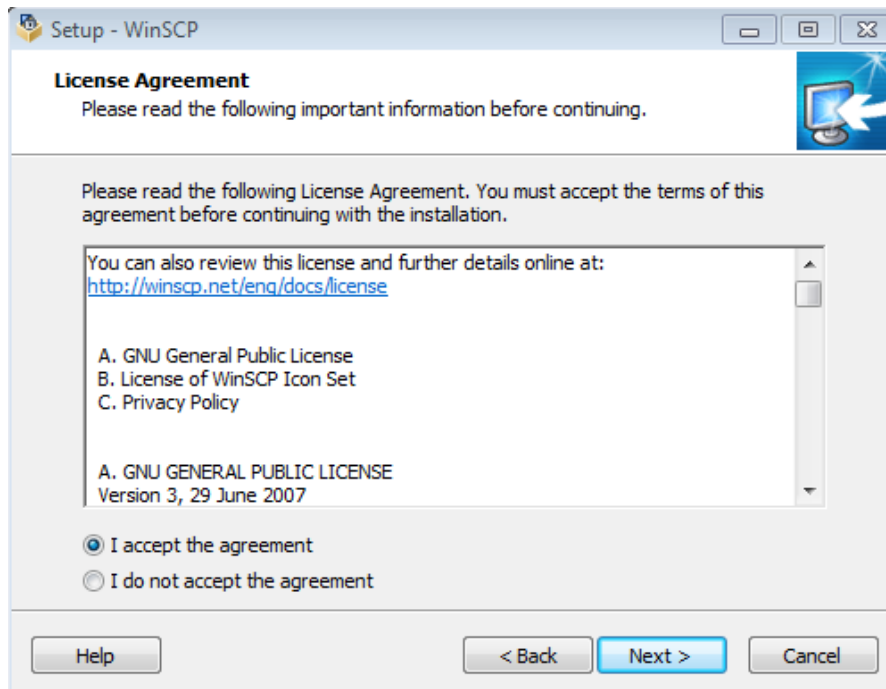
Click ‘OK’



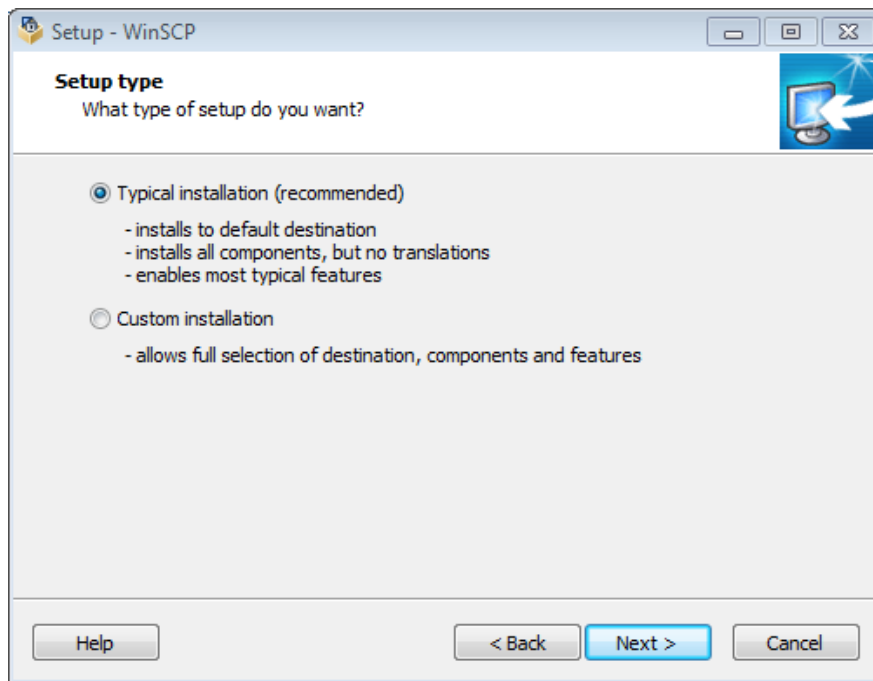
Click 'Next'



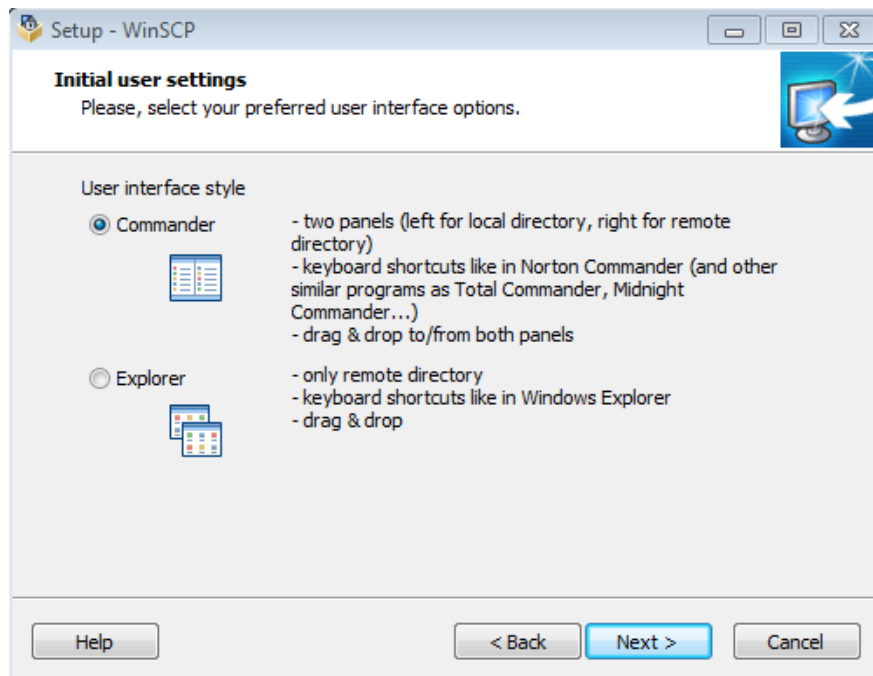
Click 'Next'



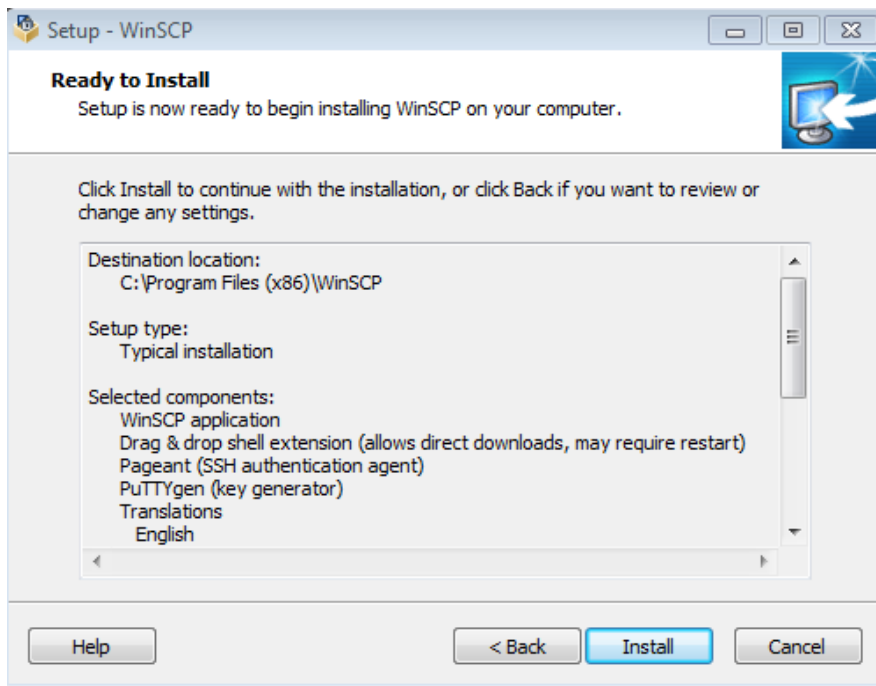
Select 'Typical Instllation (recommended)' and click 'Next'



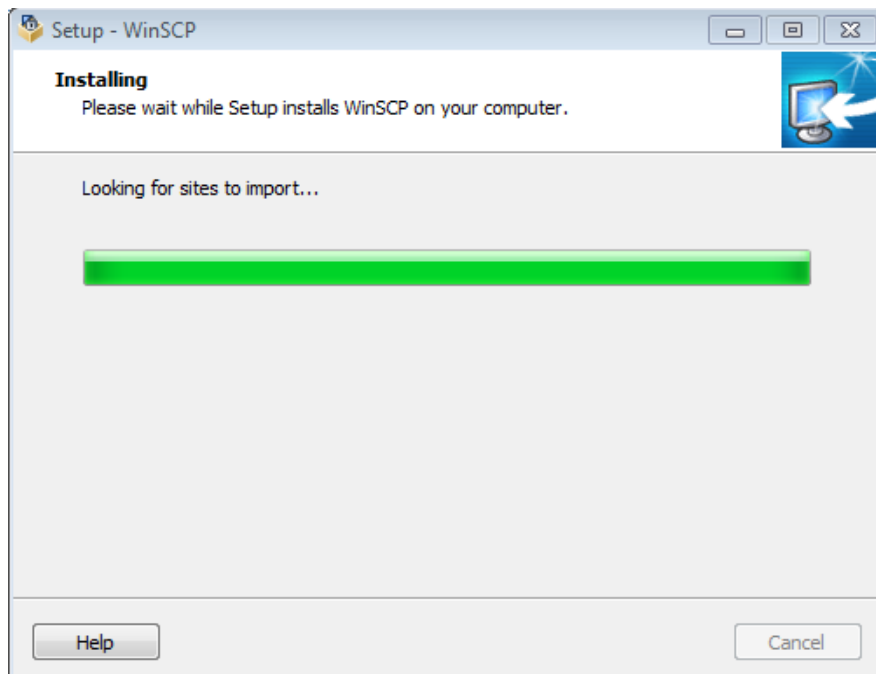
Select 'Commander' and click 'Next'



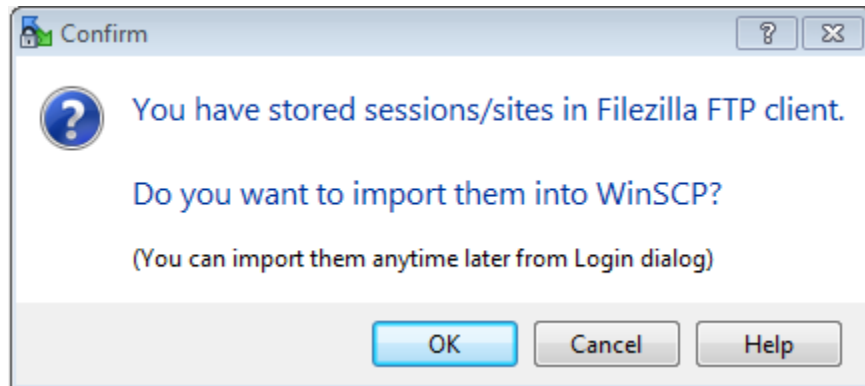
Click 'Install'



Note: the progress bar.



If you have installed Filezilla or another FTP program, you will be prompted to import the setting from your previous FTP program. Click 'OK' if you wish to import.



Choose the connections that you wish to import (screen not shown)

Click 'Finish'



Step 3 – Configure the Client Program

Launch WinSCP

Enter the information in the ‘Session’ fields or click the “Manage” button and select ‘NewSite’ from the dropdown
Complete the Session information fields:

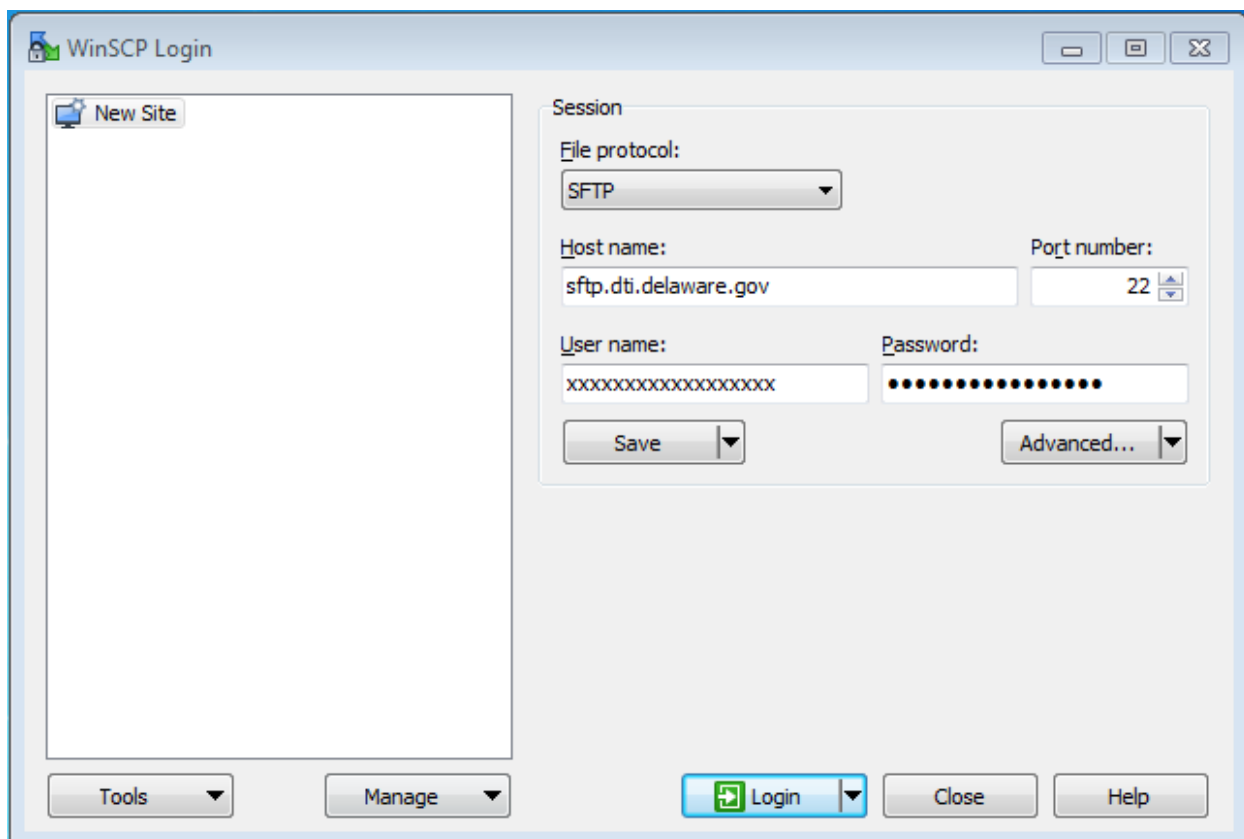
File protocol: SFTP

Host name: sftp.dti.Delaware.gov

Port number: 22

User name: XXXXXXXXXXXX

Password: XXXXXXXXXXX, (Password is case sensitive)



Click the “Manage” button and select ‘Save As...’ and enter a name “FirstMap”

Step 4 – Connecting to the Site

To connect to the ‘FirstMap’ site, click the “**Login**” button:
This will connect you to the ‘FirstMap’ site.