

Service Definition File

Creating Service Definition file while Disconnected from the server

When disconnected from the server you will configure your service definition with no available connection to ArcGIS Server.

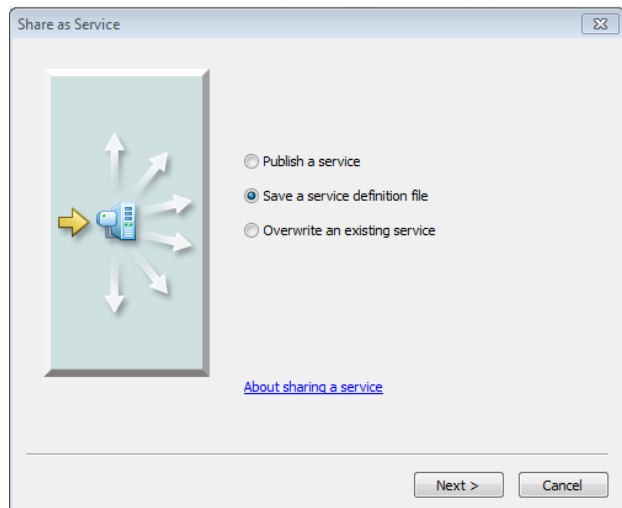
- Make sure the option **Include data in service definition when publishing** is unchecked when creating the file. Keep in mind that the data needs to be in a location that is visible to ArcGIS Server. When you publish, the service will continue to reference the original data included in your GIS resource. A separate copy is not maintained on the server. Using this method creates a snapshot of your GIS resource at the time the service definition file is published.

Create a Service Definition in ArcGIS for Desktop

Using ArcGIS for Desktop, you can quickly create a service definition that can be uploaded and published to your ArcGIS Server site.

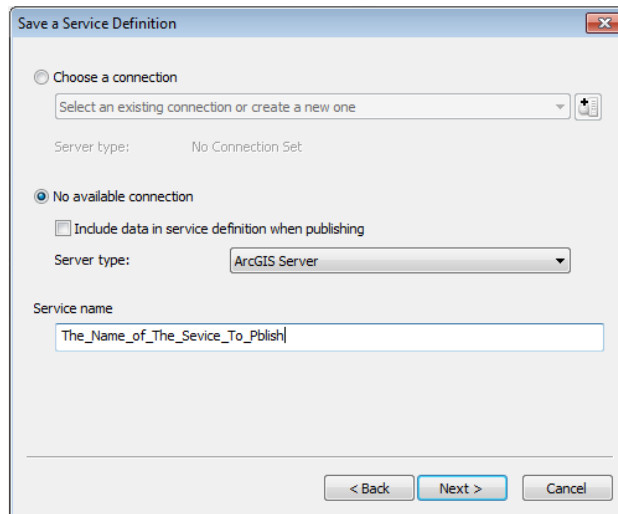
1. In the **Share as Service** window, choose **Save a service definition file**.

Click **Next**.



2. In the *Save a Service Definition* window:

- Select **No available connection**.
- Do not check **Include data in service definition when publishing**.
- In the **Server Type** drop-down list, choose **ArcGIS Server**.
- Enter a new name for the service. The name cannot be more than 120 characters long and may contain only alphanumeric characters and underscores.
- Click **Next**.



Save a Service Definition

Choose a connection

Select an existing connection or create a new one

Server type: No Connection Set

No available connection

Include data in service definition when publishing

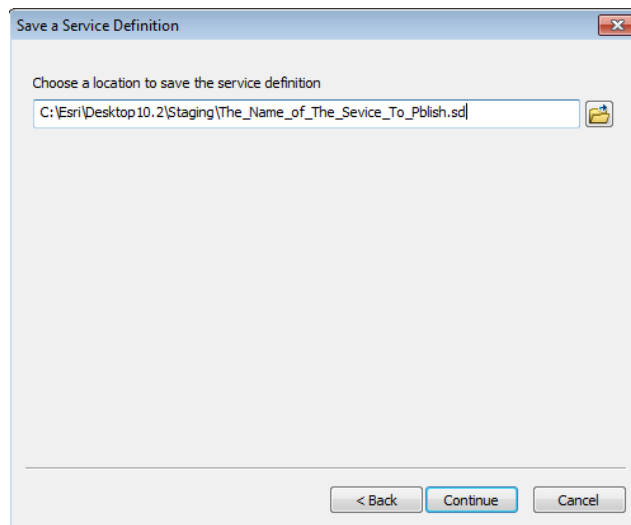
Server type: ArcGIS Server

Service name

The_Name_of_The_Service_To_Pblish

< Back Next > Cancel

3. Choose the location to save the service definition file. You can accept the default or specify a location of your own. Click **Continue**.



Save a Service Definition

Choose a location to save the service definition

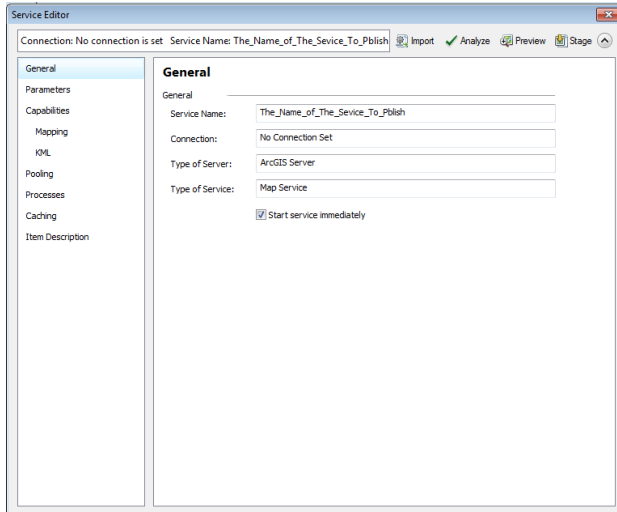
C:\Esri\Desktop10.2\Staging\The_Name_of_The_Service_To_Pblish.sd

< Back Continue Cancel

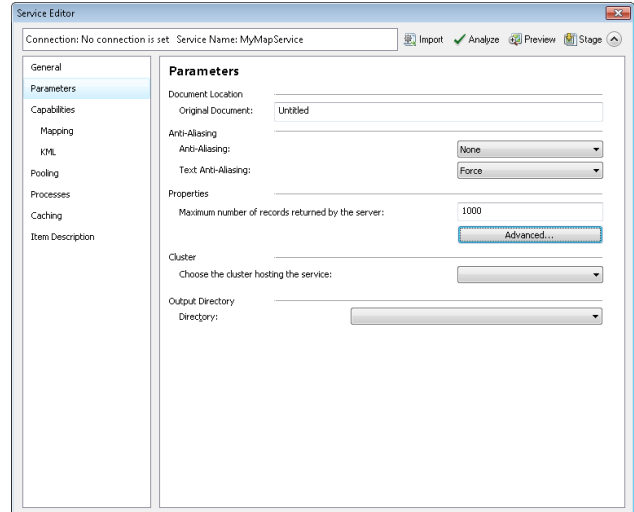
4. In the Service Editor, set the properties you want for your service definition. Here you can choose what users can do with your service definition and take control of how the server will expose your service definition.

5. Service Editor Settings:

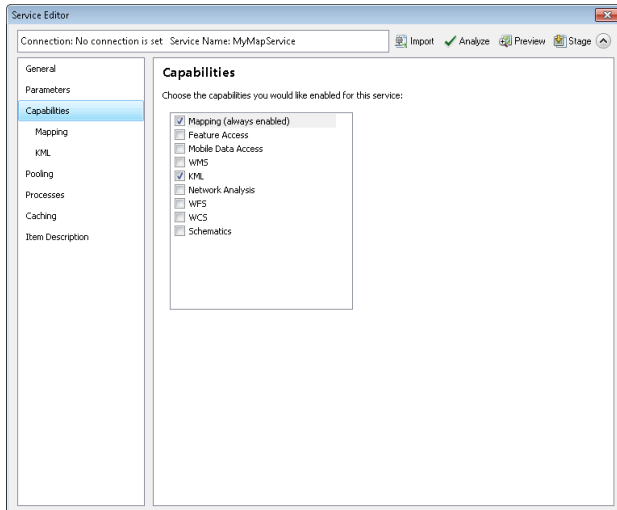
5.1. General:



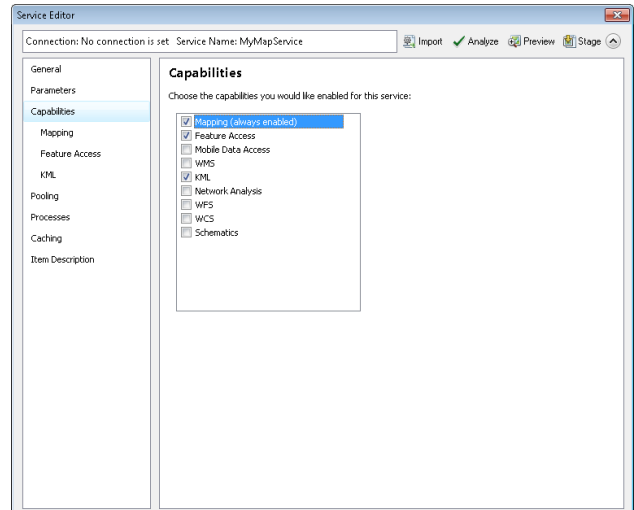
5.2. Parameters:



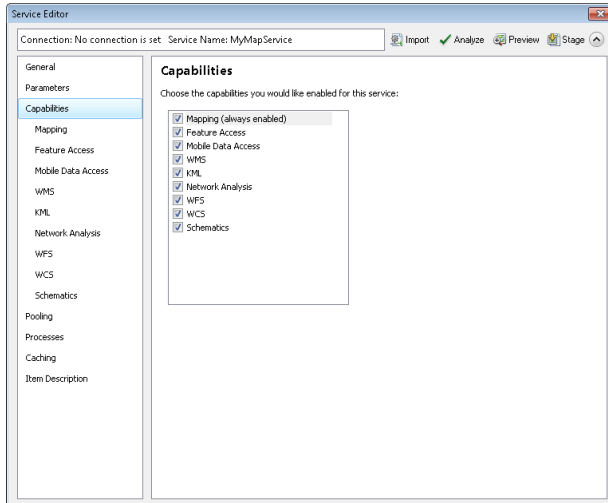
5.3. Capabilities:



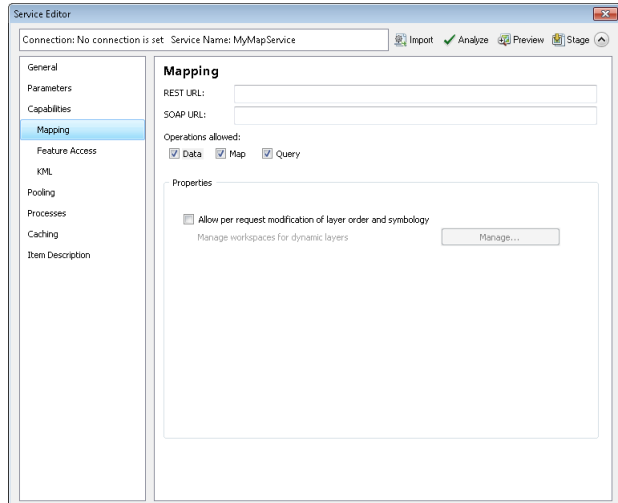
5.4. Capabilities – Feature Access:



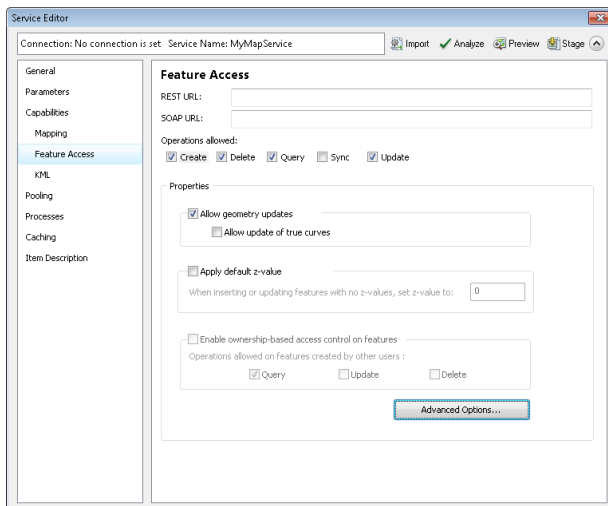
5.5. Capabilities – Mobile Data Access:



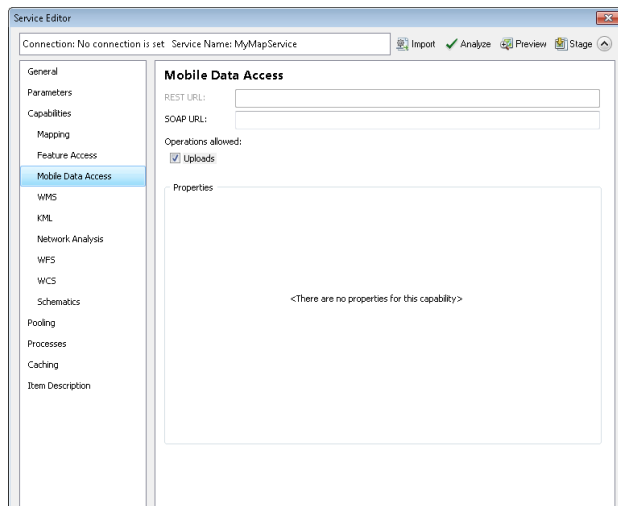
5.6. Mapping:



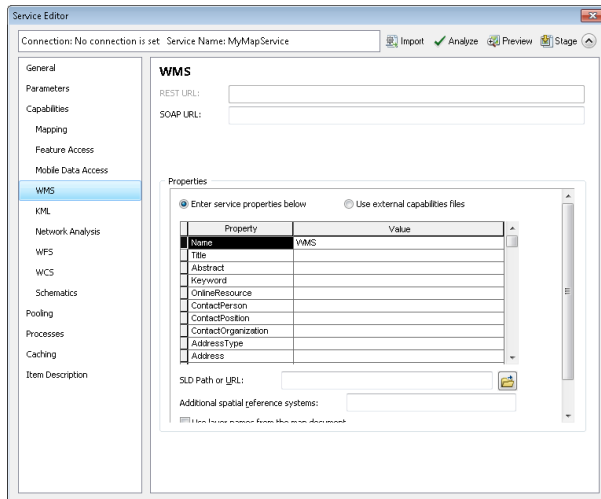
5.7. Feature Access:



5.8. Mobile Data Access:



5.9 Mobile Data Access – WMS:



Service Editor
Connection: No connection is set Service Name: MyMapService

General
Parameters
Capabilities
Mapping
Feature Access
Mobile Data Access
WMS
KML
Network Analysis
WFS
WCS
Schematics
Pooling
Processes
Caching
Item Description

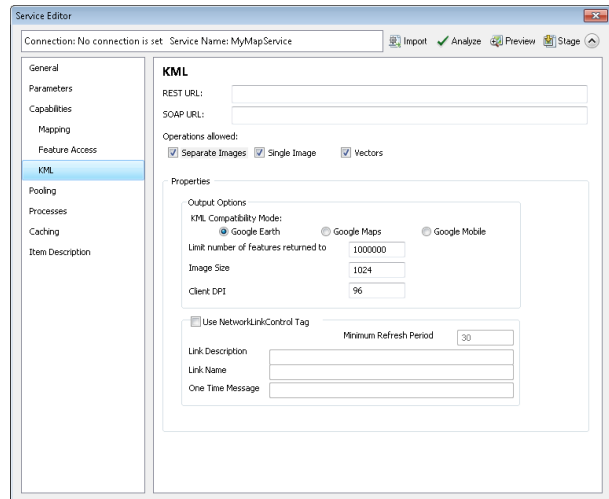
REST URL:
SOAP URL:

Properties
 Enter service properties below
 Use external capabilities files

Property	Value
Name	WMS
Title	
Abstract	
Keyword	
OnlineResource	
ContactPerson	
ContactPosition	
ContactOrganization	
AddressType	
Address	

SLD Path or URL:
Additional spatial reference systems:

5.10. Mobile Data Access - KML:



Service Editor
Connection: No connection is set Service Name: MyMapService

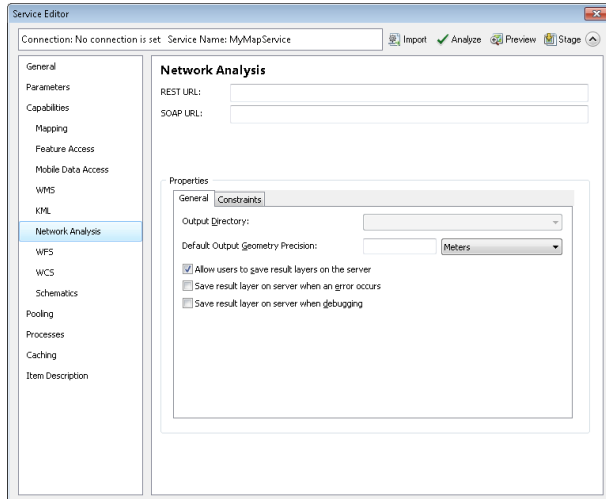
General
Parameters
Capabilities
Mapping
Feature Access
KML
Pooling
Processes
Caching
Item Description

REST URL:
SOAP URL:

Operations allowed:
 Separate Images
 Single Image
 Vectors

Properties
 Output Options
 KML Compatibility Mode:
 Google Earth
 Google Maps
 Google Mobile
 Limit number of Features returned to: 100000
 Image Size: 1024
 Client DPI: 96
 Use NetworkLinkControl Tag
 Minimum Refresh Period: 30
 Link Description:
 Link Name:
 One Time Message:

5.11. Mobile Data Access – Network Analysis:



Service Editor
Connection: No connection is set Service Name: MyMapService

General
Parameters
Capabilities
Mapping
Feature Access
Mobile Data Access
WMS
KML
Network Analysis
WFS
WCS
Schematics
Pooling
Processes
Caching
Item Description

REST URL:
SOAP URL:

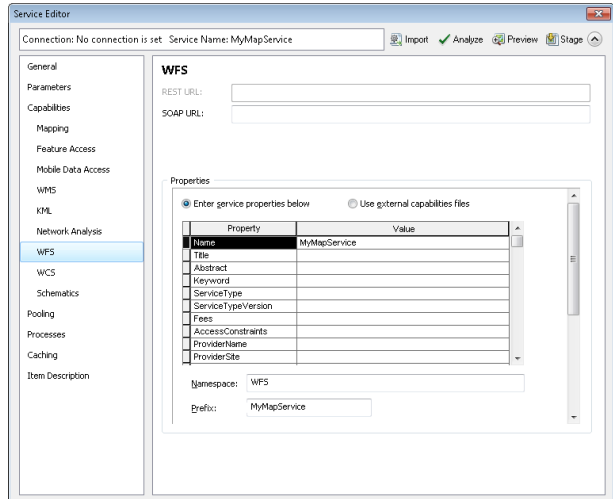
Properties
 Enter service properties below
 Use external capabilities files

General Constraints

Output Directory:
Default Output Geometry Precision: Meters

Allow users to save result layers on the server
 Save result layer on server when an error occurs
 Save result layer on server when debugging

5.12. Mobile Data Access - WFS:



Service Editor
Connection: No connection is set Service Name: MyMapService

General
Parameters
Capabilities
Mapping
Feature Access
Mobile Data Access
WMS
KML
Network Analysis
WFS
WCS
Schematics
Pooling
Processes
Caching
Item Description

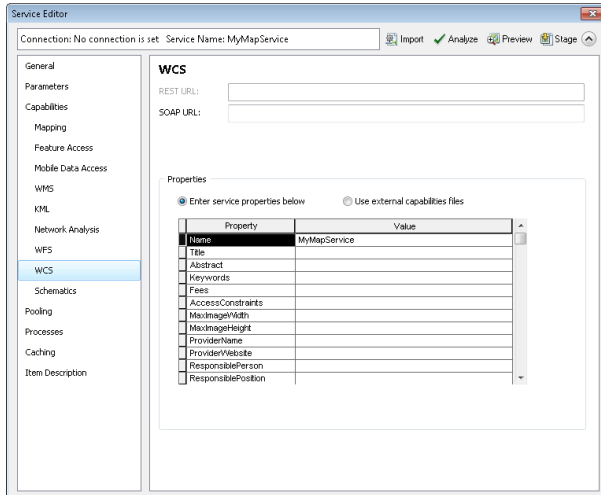
REST URL:
SOAP URL:

Properties
 Enter service properties below
 Use external capabilities files

Property	Value
Name	MyMapService
Title	
Abstract	
Keyword	
ServiceType	
ServiceTypeVersion	
Fees	
AccessConstraints	
ProviderName	
ProviderSite	

Namespace: WFS
Prefix: MyMapService

5.13. Mobile Data Access – WCS:



Service Editor
Connection: No connection is set Service Name: MyMapService

General
Parameters
Capabilities
Mapping
Feature Access
Mobile Data Access
WMS
KML
Network Analysis
WFS
WCS
Schematics
Pooling
Processes
Caching
Item Description

WCS

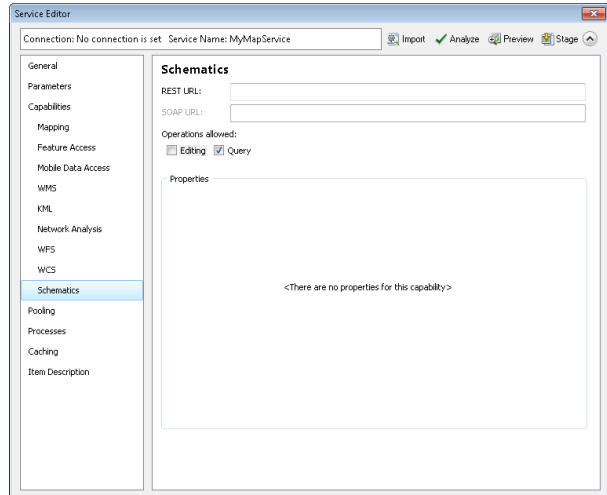
REST URL:
SOAP URL:

Properties

Enter service properties below Use external capabilities files

Property	Value
Name	MyMapService
Title	
Abstract	
Keywords	
Fees	
AccessConstraints	
MaxImageWidth	
MaxImageHeight	
ProviderName	
ProviderWebsite	
ResponsiblePerson	
ResponsiblePosition	

5.14. Mobile Data Access - Schematics:



Service Editor
Connection: No connection is set Service Name: MyMapService

General
Parameters
Capabilities
Mapping
Feature Access
Mobile Data Access
WMS
KML
Network Analysis
WFS
WCS
Schematics
Pooling
Processes
Caching
Item Description

Schematics

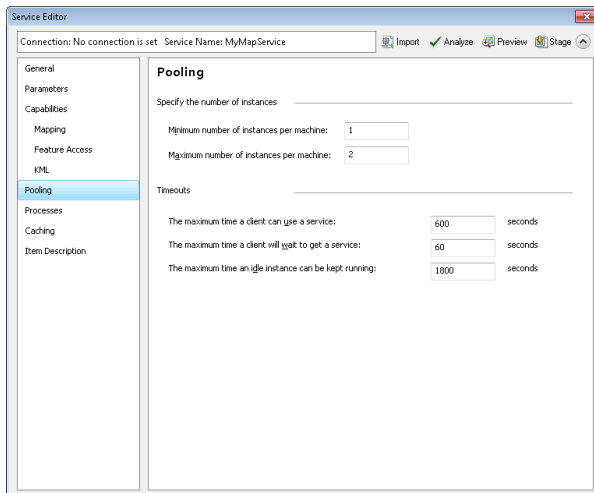
REST URL:
SOAP URL:

Operations allowed:
 Editing Query

Properties

<There are no properties for this capability>

5.15. Pooling:



Service Editor
Connection: No connection is set Service Name: MyMapService

General
Parameters
Capabilities
Mapping
Feature Access
KML
Pooling
Processes
Caching
Item Description

Pooling

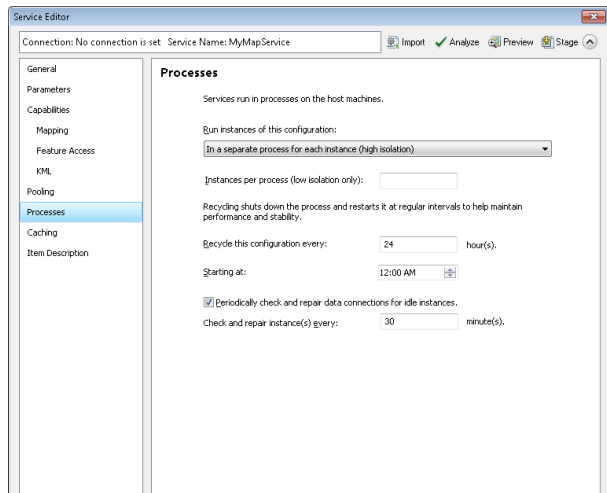
Specify the number of instances

Minimum number of instances per machine:
Maximum number of instances per machine:

Timeouts

The maximum time a client can use a service: seconds
The maximum time a client will wait to get a service: seconds
The maximum time an idle instance can be kept running: seconds

5.16. Processes:



Service Editor
Connection: No connection is set Service Name: MyMapService

General
Parameters
Capabilities
Mapping
Feature Access
KML
Pooling
Processes
Caching
Item Description

Processes

Services run in processes on the host machines.

Run instances of this configuration:

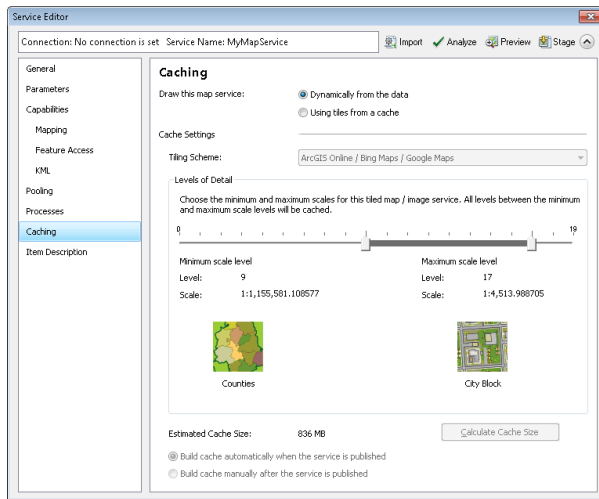
Instances per process (low isolation only):

Recycling shuts down the process and restarts it at regular intervals to help maintain performance and stability.

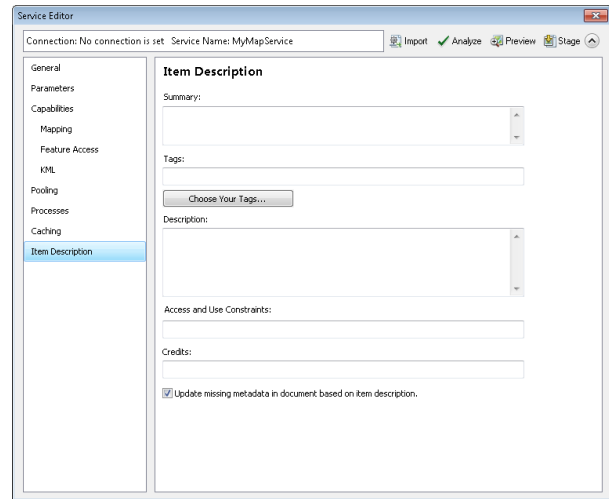
Recycle this configuration every: hour(s).
Starting at:

Periodically check and repair data connections for idle instances.
Check and repair instance(s) every: minute(s).

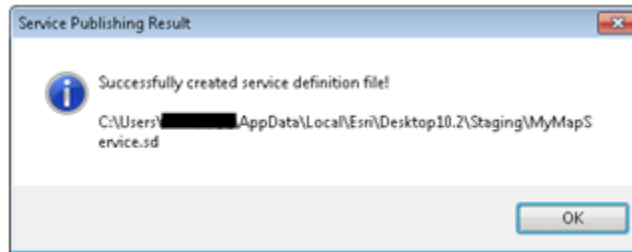
5.17 Caching:






5.18. Item Description:



5.19. Service Publishing Results:



6. Click **Analyze** . This examines your GIS resource to see if it can be saved as a service definition.
7. Fix any errors  in the **Prepare** window; this must be done before you can stage your service definition locally on disk. Optionally, you can fix the warnings and informational messages to further improve the performance and appearance of the service derived from your service definition file. For more information about resolving these issues, see [Analyzing your GIS resource](#).
 -  **Tip:** If you close the **Service Editor** during this session, you'll be prompted to save your work as a draft service. Draft services allow you to come back to your service definition configuration work at a later time. By default, service definition files being configured for a specific ArcGIS Server connection are saved in the **Drafts** folder of the connection. Conversely, service definitions being configured with no available connection to the server are saved in the staging folder on disk. For more information, see [About draft services](#).
8. Your service definition is saved to the location you specified and can be sent to DTI to be published.